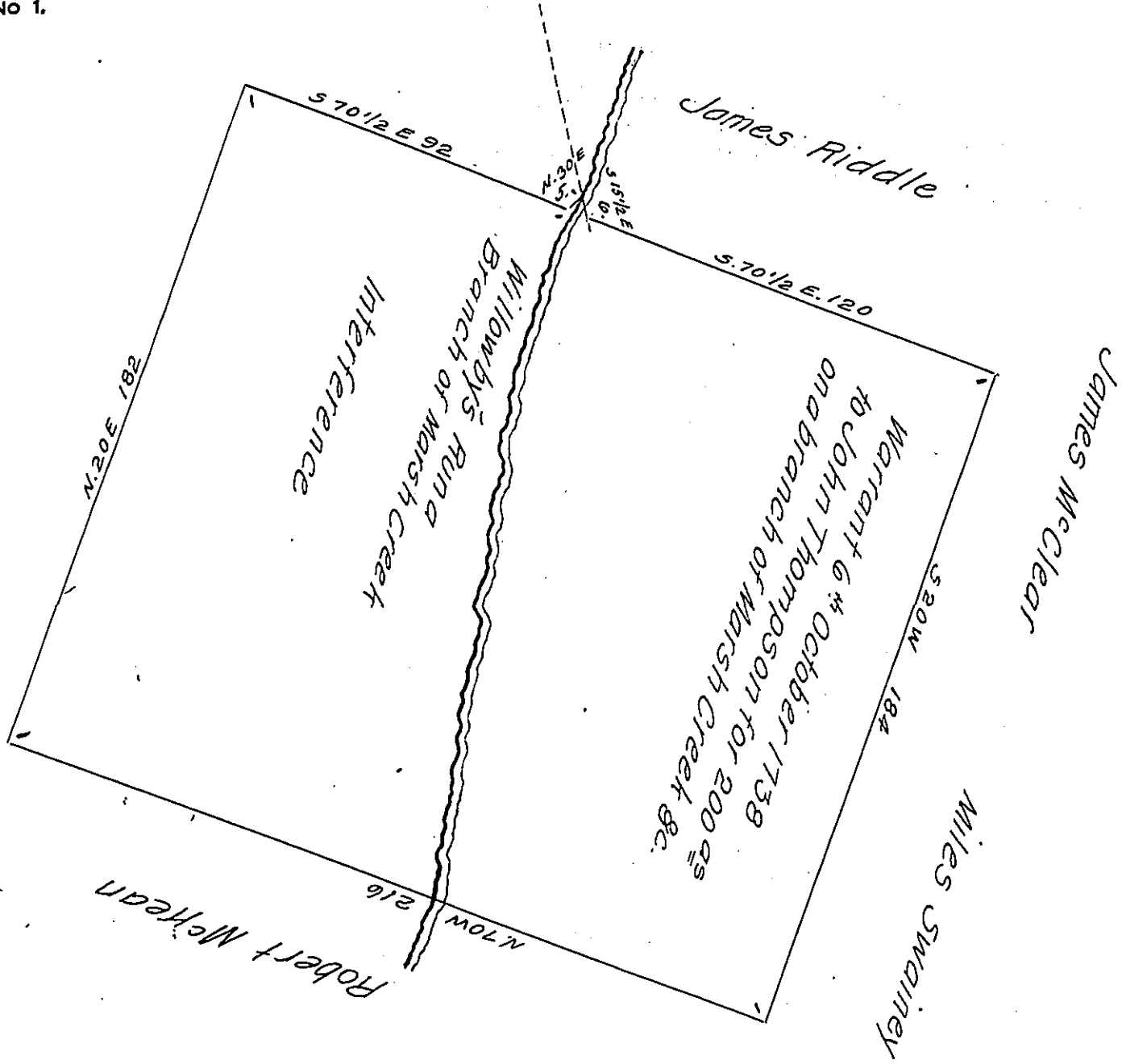


FORM NO 1.



The above Tract is an Interference of a Tract of 233 Acres and allow^{ed}
 Surveyed on Warrant dated 6th October 1738 to John Thompson, situ-
 ate in Cumberland Township, Adams County, part of Manor of Mask
 now owned by John Houck, Poor house land, — Wissler. Witness my
 hand.

December 1st 1837. Jn^o L. Gubernator. —

IN TESTIMONY that the above is a copy of the original remaining on file in
 the Department of Internal Affairs of Pennsylvania, made
 conformably to an Act of Assembly approved the 16th day of
 February, 1833, I have hereunto set my Hand and caused
 the Seal of said Department to be affixed at Harrisburg,
 this twenty third day of November 1908.

Henry Houck
 Secretary of Internal Affairs.